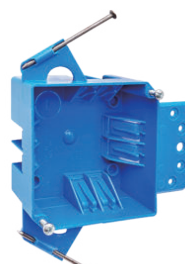
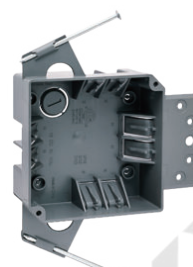


AMERICAN PLASTIC BOX

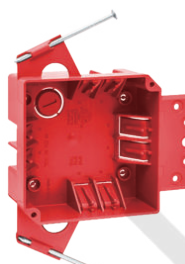
| | |
|-------------------------------------|--|
| MODEL NUMBER | APB418A |
| CUBIC CAPACITY | 18 Cubic Inches |
| DESCRIPTION | New Work; 4" Square; Captive Nail and molded bracket Mounting; Switch and Outlet Box with Wire Clamps. With Eight Integral Clamps |
| MATERIAL | PPO |
| MOUNTING MEANS | Captive Nails and Molded Bracket |
| PRODUCTS SIZE L×W×D | 4"×4"×1-5/8" |
| OUTER BOX SIZE L×W×D(CM) | 53.5×31.5×30.5 |
| STD. CTN. QTY. | 50 Pcs |
| CERTIFICATIONS | ISO9001, ISO14001, ETL5010519, 2-hour fire rating |
| COLOR | Blue, Gray, Red..... Various Colors Can Be Customised |



Blue



Gray



Red

Various Colors Can Be Customised



FEATURES & BENEFITS

- Designed and listed for use with non-metallic sheathed cable in accordance with Article 314 of the National Electrical Code®, they make fast work of any residential or light commercial application.
- Non-metallic boxes feature PPO construction for easier installation, greater performance and lower installation cost.
- All PPO boxes are permissible for use with 90° C connectors.
- Wiring System Non-metallic sheathed cable.
- Various Colors Can Be Customised.
- ETL Listed and carries a 2-hour fire rating.

