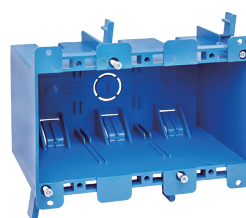
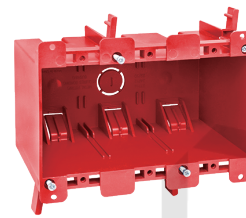


AMERICAN PLASTIC BOX

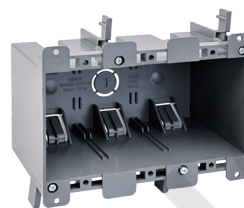
MODEL NUMBER	APB030D
CUBIC CAPACITY	55 Cubic Inches
DESCRIPTION	Deep; Old Work; 3-Gang; Mounting Ears and Two Swing Clamps; For Use With Non-Metallic Sheathed Cable; Suitable For Masonry Walls. With Six Integral Clamps
MATERIAL	PPO
MOUNTING MEANS	Mounting Ears and 2 Swing Clamps
PRODUCTS SIZE L×W×D	5.72"×2.79"×3.69"
OUTER BOX SIZE L×W×D(CM)	47×40×28.5
STD. CTN. QTY.	36 Pcs
CERTIFICATIONS	ISO9001, ISO14001, ETL5010519, 2-hour fire rating
COLOR	Blue, Gray, Red, Black..... Various Colors Can Be Customised



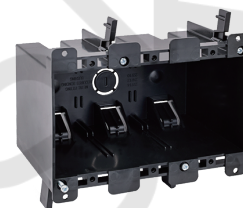
Blue



Red



Gray



Black

Various Colors Can Be Customised



Intertek
5010519
2-HR-W-C



FEATURES & BENEFITS

- Designed and listed for use with non-metallic sheathed cable in accordance with Article 314 of the National Electrical Code®, they make fast work of any residential or light commercial application.
- Non-metallic boxes feature PPO construction for easier installation, greater performance and lower installation cost.
- All PPO boxes are permissible for use with 90° C connectors.
- Wiring System Non-metallic sheathed cable.
- Various Colors Can Be Customised.
- ETL Listed and carries a 2-hour fire rating.

