

Electrical Non-metallic Tubing (ENT) System

Flex-Plus ENT is a non-metallic flexible raceway for use in walls, floors and non-plenum ceilings. It's lightweight, hand-bendable and free from sharp edges, which reduces installation time and saves money.



Options:

- Sizes 1/2" through 2"
- Colors:
 - Yellow color for communication circuits and signaling cable
 - Red color for fire alarm circuits
 - Blue color for power circuits
- Packaging: Coils or Reels

Standard Stock - Reels

Cat. No.	Size (in.)	Color	Nom. I.D. (in.)	Nom. O.D. (in.)	Pull Tape	Min. Bend Radius (in.)	Reel Size (F×W) (in.)	Reel Type (W=Wood)	Reel Length	Reel Wt. (lbs.)	Wt. Per 100 Ft. (lbs.)
12005AK-001	1/2	Blue	0.56	0.84	Empty	6	36×24	W	1500	40	10
1205AKY-001	1/2	Yellow	0.56	0.84	Empty	6	36×24	W	1500	40	10
1205AKR-001	1/2	Red	0.56	0.84	Empty	6	36×24	W	1500	40	10
12007AA-001	3/4	Blue	0.76	1.05	Empty	6	36×24	W	1000	40	14
1207AAY-001	3/4	Yellow	0.76	1.05	Empty	6	36×24	W	1000	40	14
1207AAR-001	3/4	Red	0.76	1.05	Empty	6	36×24	W	1000	40	14
12008-750	1	Blue	1.00	1.315	Empty	6	36×24	W	750	40	20
12008Y-750	1	Yellow	1.00	1.315	Empty	6	36×24	W	750	40	20
12008R-750	1	Red	1.00	1.315	Empty	6	36×24	W	750	40	20
12009-750	1-1/4	Blue	1.402	1.66	Empty	7	48×32	W	750	90	19
12010-750	1-1/2	Blue	1.554	1.90	Empty	8-1/4	48×32	W	750	90	39
12010Y-750	1-1/2	Yellow	1.554	1.90	Empty	8-1/4	48×32	W	750	90	39
12011-500	2	Blue	2.030	2.375	Empty	9-1/2	48×32	W	500	90	32
12011Y-500	2	Yellow	2.030	2.375	Empty	9-1/2	48×32	W	500	90	32
12011R-500	2	Red	2.030	2.375	Empty	9-1/2	48×32	W	500	90	32



Standard Stock - Coils

Cat. No.	Size (in.)	Color	Nom. I.D. (in.)	Nom. O.D. (in.)	Pull Tape	Min. Bend Radius (in.)	Coil Length (ft.)	Wt. Per 100 Ft. (lbs.)
12005-200	1/2	Blue	0.56	0.84	Empty	6	200	10
12005Y-200	1/2	Yellow	0.56	0.84	Empty	6	200	10
12005R-200	1/2	Red	0.56	0.84	Empty	6	200	10
12007-100	3/4	Blue	0.76	1.05	Empty	6	100	14
12007Y-100	3/4	Yellow	0.76	1.05	Empty	6	100	14
12007R-100	3/4	Red	0.76	1.05	Empty	6	100	14
12008-100	1	Blue	1.00	1.315	Empty	6	100	22
12008Y-100	1	Yellow	1.00	1.315	Empty	6	100	22
12008R-100	1	Red	1.00	1.315	Empty	6	100	22

10 ft. Lengths

Cat. No.	Size (in.)	Color	Nom. I.D. (in.)	Nom. O.D. (in.)	Std. Ctn. Qty.	Std. Ctn. Wt. (lbs.)
12005-UPC	1/2	Blue	0.56	0.84	10 ft.	1.02
12007-UPC	3/4	Blue	0.76	1.05	10 ft.	1.46
12008-010	1	Blue	1.00	1.315	10 ft.	2.93

NOTE:
ENT may show color deterioration in direct sunlight over an extended period of time. It is suggested that all ENT products not be stored outside. Since this product is not intended for use outdoors, it should not be exposed to extended periods of direct sunlight.



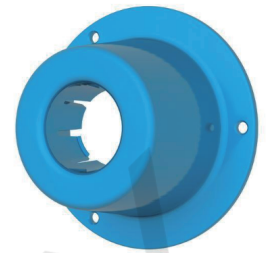
Stub Downs



Vertical Stub Down

Vertical Stub Downs are designed to provide a quick, easy connection to a wood deck or transition from slab-to-slab using "Quick Connect" snap-in design... simply snap the ENT in place. The integral snaps provide a secure mount – preventing the ENT from pulling out while maintaining the ability for easy removal of the fitting once the deck is removed. All in a concrete tight application. The underside of this fitting provides ample room to attach a coupling to the ENT to continue the run. Vertical Stub Downs are manufactured out of a highly engineered thermoplastic material to provide extra strength and durability, and are available in sizes 1/2", 3/4" and 1".

Cat. No.	Size	Products Size L×W×D	Std. Ctn. Qty.	Std. Ctn. Wt. (lbs.)
A210D	1/2"	1.60"×1.93"×1.93"	50	3.8
A210E	3/4"	1.60"×1.93"×1.93"	50	3.7
A210F	1"	1.60"×2.25"×2.25"	50	4.8



Vertical Stub Down Transition Adapter

Vertical Stub Down Transition Adapters like our Vertical Stub Downs, provide a means to transition from ENT to another wire management product where code requires other wire management means i.e. "area of physical damage". The integral snaps provide a secure mount – preventing the ENT from slipping or pulling out, while the deck mount flange has a threaded port allowing connection to other conduit system using a terminal adapter. Vertical Stub Down Transition Adapters are manufactured out of polycarbonate material to provide extra strength and durability. They're concrete tight, and available in sizes 1/2", 3/4" and 1".

Cat. No.	Size	Products Size L×W×D	Std. Ctn. Qty.	Std. Ctn. Wt. (lbs.)
A200D	1/2" Female ENT to NPSC (Female)	1.62"×1.03"×1.13"	50	2.3
A200E	3/4" Female ENT to NPSC (Female)	1.74"×1.25"×1.35"	50	2.8
A200F	1" Female ENT to NPSC (Female)	1.89"×1.52"×1.62"	50	3.9



45° Stub Down

45 Degree Stub Downs are designed to allow a smooth transition from cross deck ENT runs to vertical applications. The integral snaps provide a secure mount – preventing the ENT from slipping or pulling out- but also allow the stub to easily be removed. The underside of this fitting provides ample room to attach a coupling to the ENT to continue the run. 45 Degree Stub Downs are manufactured out of a highly engineered thermoplastic material to provide extra strength and durability. They're concrete tight, and available in sizes 1/2", 3/4" and 1".

Cat. No.	Size	Products Size L×W×D	Std. Ctn. Qty.	Std. Ctn. Wt. (lbs.)
A220D	1/2"	3.37"×2.10"×1.92"	25	1.8
A220E	3/4"	3.62"×2.10"×2.03"	25	2.0
A220F	1"	4.00"×2.29"×2.42"	25	2.6



90° Stub Down Transition Adapter

90 Degree Stub Downs are designed to allow a smooth transition from cross deck ENT runs to vertical applications where code requires other wire management means, i.e. "area of physical damage". The integral snaps provide a secure mount – preventing the ENT from slipping or pulling out, while the deck mount flange has a threaded port allowing connection to any conduit system using a terminal adapter. 90 Degree Stub Downs are manufactured out of polycarbonate material to provide extra strength and durability. They're concrete tight, and available in sizes 1/2", 3/4" and 1".

Cat. No.	Size	Products Size L×W×D	Std. Ctn. Qty.	Std. Ctn. Wt. (lbs.)
A230D	1/2" Female ENT to NPSC (Female)	3.90"×2.82"×2.51"	25	2.0
A230E	3/4" Female ENT to NPSC (Female)	4.02"×2.50"×2.72"	25	2.4
A230F	1" Female ENT to NPSC (Female)	4.34"×2.75"×3.14"	25	3.3



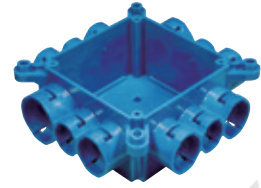
Mud Box Assemblies

Mud Box Assemblies are available in five unique styles...blank, ceiling ring, one-gang, two-gang and 4 square. All Mud Box Assemblies are manufactured out of polycarbonate material to provide extra strength and durability, are concrete tight, and have twelve integral connectors...two-1", six-3/4", and four-1/2". Using our new ENT Reducers, this product will meet ANY jobsite application.



Mud Box Base with Blank Cover

Cat. No.	Cubic Capacity	Description	Products Size L×W×D	Std. Ctn. Qty.	Std. Ctn. Wt. (lbs.)
A863BC	29.3 cu in	Mud Box with Blank Cover	5.81"×5.81"×2.26"	24	12.3



Mud Box with Ceiling Ring

Features and benefits:

- Threaded brass inserts for fan (#10-32 screws) and fixture (#8-32 screws) mountings
- Listed for fixture support up to 50 lbs.
- Listed for ceiling fans up to 35 lbs.

Cat. No.	Cubic Capacity	Description	Products Size L×W×D	Std. Ctn. Qty.	Std. Ctn. Wt. (lbs.)
A863CF	41.8 cu in	Mud Box with Ceiling Ring	5.81"×5.81"×3.39"	24	15.5
A863CFG	41.8 cu in	Mud Box with Ceiling Ring & Ground Lug	5.81"×5.81"×3.39"	24	16.1



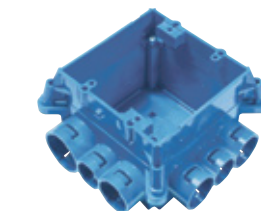
Mud Box with One-Gang Ring

Cat. No.	Cubic Capacity	Description	Products Size L×W×D	Std. Ctn. Qty.	Std. Ctn. Wt. (lbs.)
A863S	37.3 cu in	Mud Box with One-Gang Ring	5.81"×5.81"×3.39"	24	16.8
A863SG	37.3 cu in	Mud Box with One-Gang Ring & Ground Lug	5.81"×5.81"×3.39"	24	16.2



Mud Box with Two-Gang Ring

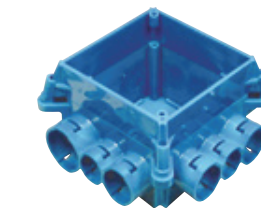
Cat. No.	Cubic Capacity	Description	Products Size L×W×D	Std. Ctn. Qty.	Std. Ctn. Wt. (lbs.)
A863D	44.0 cu in	Mud Box with Two-Gang Ring	5.81"×5.81"×3.39"	24	15.8
A863DG	44.0 cu in	Mud Box with Two-Gang Ring & Ground Lug	5.81"×5.81"×3.39"	24	16.6



Mud Box with 4" Square Ring

- 4" Square Ring not for luminaries.

Cat. No.	Cubic Capacity	Description	Products Size L×W×D	Std. Ctn. Qty.	Std. Ctn. Wt. (lbs.)
A863-4SQ	44.6 cu in	Mud Box with 4 Inch Square Ring	5.81"×5.81"×3.39"	24	15.2



Mud Box Assemblies with Mounting Feet

Mud box assemblies with mounting feet are specifically engineered and designed for use in tunnel form applications. The mounting feet are located on all four corners and enable the box to attach directly to the wall of the form using pop rivets. The pop rivets help keep the box in position during the pour and provide a safe, secure and rustresistant mount.

Cat. No.	Cubic Capacity	Description	Products Size L×W×D	Std. Ctn. Qty.	Std. Ctn. Wt. (lbs.)
A863-4SQF	44.6 cu in	4-Square Ring	5.81"×5.81"×3.39"	24	17.15
A863CFF	41.8 cu in	Ceiling Ring	5.81"×5.81"×3.39"	24	16.61
A863CFGF	41.8 cu in	Ceiling Ring and Ground Lug	5.81"×5.81"×3.39"	24	17.46
A863DF	44.0 cu in	Double Gang	5.81"×5.81"×3.39"	24	17.42
A863DGF	44.0 cu in	Double Gang and Ground Lug	5.81"×5.81"×3.39"	24	17.99
A863SF	37.3 cu in	Single Gang	5.81"×5.81"×3.39"	24	17.15
A863SGF	37.3 cu in	Single Gang and Ground Lug	5.81"×5.81"×3.39"	24	17.44



Mounting Brackets

ENT mounting bracket is specifically designed for use with ENT mud box assemblies in vertical concrete walls where one- or two-gang boxes are needed. The soft-steel strap enables the outlet box to be secured to rebar. The bracket combination ensures a straight box opening and a concrete-tight fit. Mud box not included.



Cat. No.	Description	Products Size L×W×D	Std. Ctn. Qty.	Std. Ctn. Wt. (lbs.)
A863MB	Mud Box Mounting Kit	5.81"×5.81"×3.39"	1	0.98

ENT BRIDGE

ENT Bridge is designed to support long ENT runs in concrete pour applications. This makes pulling wire/cable a snap. Installation is easy... simply mount the ENT bridge, using nails or screws, to the wood deck mounting and snap the ENT into place. The bridge is designed to hold the conduit in place while minimizing dips in the conduit over long runs. ENT Bridge is manufactured out of a highly engineered thermoplastic material to provide extra strength and durability, and can accommodate ENT sizes 1/2", 3/4", and 1".



Cat. No.	Description	Products Size L×W×D	Std. Ctn. Qty.	Std. Ctn. Wt. (lbs.)
A293DEF	ENT Bridge	5.76"×3.50"×3.22"	50	9.0



Transition Adapters



Male ENT to Schedule 40 & 80 PVC Conduit

Male ENT to Schedule 40 & 80 PVC Conduit Transition Adapters are designed to connect Schedule 40 conduit to Flex-Plus ENT boxes and fittings. Simply solvent cement the PVC adapter to the Schedule 40 conduit and snap the adapter into the "Quick Connect" snapin connector on the box or fitting. Male ENT to Schedule 40 & 80 Adapters are concrete tight and available in sizes 1/2", 3/4" and 1".

Cat. No.	Size	Products Size L×W×D	Std. Ctn. Qty.	Std. Ctn. Wt. (lbs.)
A263D	1/2" ENT to 1/2" Sch. 40 or Sch. 80	1.69"×1.07"×1.07"	100	2.4
A263E	3/4" ENT to 3/4" Sch. 40 or Sch. 80	1.76"×1.30"×1.30"	100	3.2
A263F	1" ENT to 1" Sch. 40 or Sch. 80	1.92"×1.59"×1.59"	100	4.5



ENT to EMT

ENT to EMT Transition Adapters are designed to easily transition from Flex-Plus ENT to EMT using "Quick Connect" snap-in design. The EMT is held securely in place using the small screw provided. This helps prevent the EMT from slipping/shifting out of the adapter. All ENT to EMT adapters are manufactured out of polycarbonate material to provide extra strength and durability. They're concrete tight, and available in sizes 1/2", 3/4" and 1".

Cat. No.	Size	Products Size L×W×D	Std. Ctn. Qty.	Std. Ctn. Wt. (lbs.)
A245D	1/2" ENT to 1/2" EMT	1.75"×1.03"×1.13"	100	3.4
A245E	3/4" ENT to 3/4" EMT	1.75"×1.25"×1.35"	100	4.1
A245F	1" ENT to 1" EMT	2.00"×1.52"×1.62"	100	5.4



Reducers

ENT Reducers are designed to provide an easy transition from 1" ENT to 3/4" ENT or from 3/4" ENT to 1/2" ENT. They're concrete tight, and manufactured out of polycarbonate material to provide extra strength and durability. ENT Reducers provide flexibility while on the jobsite by minimizing the need to carry size specific boxes and fittings. ENT Reducers provide the versatility to convert fittings and boxes to many different sizes and configurations.

Cat. No.	Size	Products Size L×W×D	Std. Ctn. Qty.	Std. Ctn. Wt. (lbs.)
A273DE	3/4" to 1/2"	1.71"×1.03"×1.12"	100	3.2
A273EF	1" to 3/4"	1.85"×1.25"×1.35"	100	2.4



TRANSITION ADAPTERS



Quick Connect Adapters & Couplings

USLINSKY®



Features and Benefits:

- One piece ENT Quick Connect Couplings, Threaded Adapters and Snap-In Terminator Adapters are suitable for damp locations. Quick Connect Couplings and Threaded Adapters are concrete-tight when used with ENT.
- All Schedule 40 fittings are compatible with ENT when using ENT cement.
- Schedule 40 fittings are recommended for use with 1-1/4" – 2" Flex-Plus Blue ENT.
- Use of ENT Blue Quick-Set Cement is required.
- When One Piece Quick Connect Snap-In Terminator Adapters are installed in a concrete application, flat sealing washers must be used on the box connection ends.

Couplings

Cat. No.	Size	Products Size L×W×D	Std. Ctn. Qty.	Std. Ctn. Wt. (lbs.)
CP50	1/2"	1.59"×1.03"×1.13"	150	2.90
CP75	3/4"	1.86"×1.25"×1.35"	100	3.00
CP100	1"	1.86"×1.52"×1.62"	50	2.30



Threaded Adapters

Cat. No.	Size	Products Size L×W×D	Std. Ctn. Qty.	Std. Ctn. Wt. (lbs.)
TA50	1/2"	1.59"×1.03"×1.13"	150	2.55
TA75	3/4"	1.86"×1.25"×1.35"	100	2.30
TA100	1"	1.86"×1.52"×1.62"	50	2.00



Snap-In Adapters

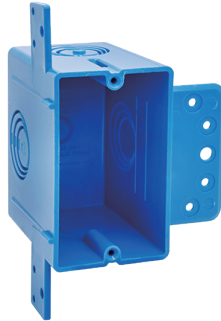
Cat. No.	Size	Products Size L×W×D	Std. Ctn. Qty.	Std. Ctn. Wt. (lbs.)
SA50	1/2"	1.41"×1.03"×1.13"	150	2.70
SA75	3/4"	1.54"×1.25"×1.35"	100	2.90
SA100	1"	1.67"×1.52"×1.62"	50	2.30



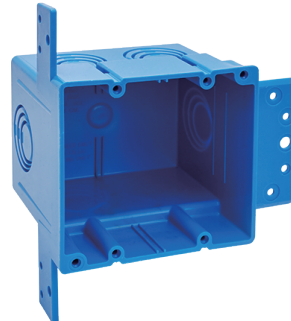


Eccentric Knockouts

ENT Outlet and Switch Boxes with Eccentric Knockouts are designed to allow selective ENT openings – 1/2", 3/4" and 1" – based on application needs. They provide the largest capacity available in the market today - 22 cu. in. Single Gang, and 38 cu. in. Double Gang – and can be mounted to wood or steel studs. ENT Outlet and Switch Boxes with Eccentric Knockouts are manufactured out of a highly engineered thermoplastic material to provide extra strength and durability, and are available in single gang and double gang styles. Note: The double gang version is also a 4 square box.



APB122BST



APB238BST



Cat. No.	Cubic Capacity	Description	Products Size L×W×D	Outer Box Size L×W×D(cm)	Std. Ctn. Qty.
APB122BST	22 cu in	New Work; 1-Gang ENT Non-Metallic Outlet Box w/ Eccentric Knockouts; Number of Knockout 4, Knockout Size 1/2 Inch, 3/4 Inch, and 1 Inch.	2.1"×3.5"×3.25"		25
APB238BST	38 cu in	New Work; 2-Gang ENT Non-Metallic Outlet Box w/ Eccentric Knockouts; Number of Knockout 5, Knockout Size 1/2 Inch, 3/4 Inch, and 1 Inch.	3.85"×3.5"×3.45"		25

Outlet Box Divider

ENT Outlet Box Divider is specifically designed for applications where a combined high and low voltage closed back box is needed such as placement in a fire-rated wall. Just slip the divider into place, to give you the split box you need. ENT Outlet Box Divider is ETL Listed for use with APB238BST Box only.



Cat. No.	Cubic Capacity	Description	Products Size L×W×D	Outer Box Size L×W×D(cm)	Std. Ctn. Qty.
APB2380BD	-	2-Gang ENT Non-Metallic Outlet Box Divider.	3.25"×3.5"×0.1"		50



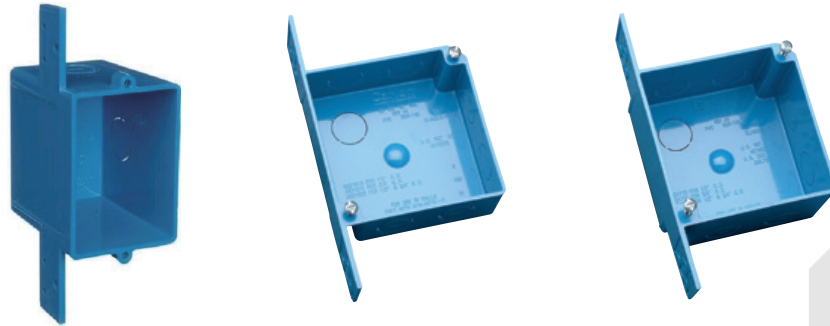
Quick Connect Outlet and Switch Boxes

USLINSKY®



Features and Benefits:

- Suitable for masonry walls
- Meets NEMA OS-2
- 2-hour-or-less fire-resistant wall assemblies



One-Gang-16 cu. in.



Cat. No.	Cubic Capacity	Description	Products Size L×W×D	Outer Box Size L×W×D(cm)	Std. Ctn. Qty.
A58381D	16 cu in	3×2-1/4×3 (1/2" KO's)	3"×2-1/4"×3"		25
A58381E	16 cu in	3×2-1/4×3 (3/4" KO's)	3"×2-1/4"×3"		25

4" Square-20 cu. in.



Cat. No.	Cubic Capacity	Description	Products Size L×W×D	Outer Box Size L×W×D(cm)	Std. Ctn. Qty.
A52151D	20 cu in	4×4×1-1/2 (1/2" KO's)	4"×4"×1-1/2"		100
A52151E	20 cu in	4×4×1-1/2 (3/4" KO's)	4"×4"×1-1/2"		100
A521DE	20 cu in	4×4×1-1/2 (1/2" & 3/4" KO's)	4"×4"×1-1/2"		100

4" Square-30.3 cu. in.



Cat. No.	Cubic Capacity	Description	Products Size L×W×D	Outer Box Size L×W×D(cm)	Std. Ctn. Qty.
A52171D	30.3 cu in	4×4×2-3/8 (1/2" KO's)	4"×4"×2-3/8"		25
A52171E	30.3 cu in	4×4×2-3/8 (3/4" KO's)	4"×4"×2-3/8"		25
A5217DE	30.3 cu in	4×4×2-3/8 (1/2" & 3/4" KO's)	4"×4"×2-3/8"		25

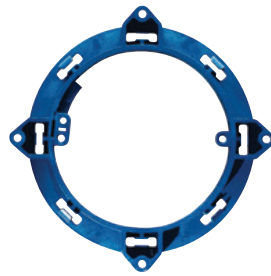


2-1/2" & 4" Mud Boxes and Covers

USLINSKY®

Features and Benefits:

- 2-hour-or-less fire-resistant floor/ceiling assemblies
- Listed for use with ceiling fans up to 35 lbs. and for fixture support up to 50 lbs.



Base Rings



Cat. No.	Cubic Capacity	Description	Products Size L×W×D	Outer Box Size L×W×D(cm)	Std. Ctn. Qty.
A861	-	Without ground lug	5.8"×5.8"×0.9"		10
CA861G	-	With ground lug	5.8"×5.8"×0.9"		10



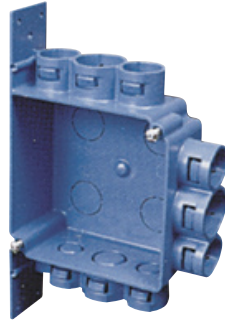
Covers



Cat. No.	Cubic Capacity	Description	Products Size L×W×D	Outer Box Size L×W×D(cm)	Std. Ctn. Qty.
A862D	26 cu in	2-1/2" Deep (1/2" KO's)	5.38"×5.38"×2-1/2"		10
A862E	26 cu in	2-1/2" Deep (3/4" KO's)	5.38"×5.38"×2-1/2"		10
A864D	44 cu in	4" Deep (1/2" KO's)	5.38"×5.38"×4"		10
A864E	44 cu in	4" Deep (3/4" KO's)	5.38"×5.38"×4"		10
A864F	44 cu in	4" Deep (1" KO's)	5.38"×5.38"×4"		10



ENT Box with Adapters



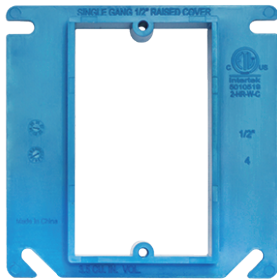
A5329DE

4" Square-ENT Box with Adapters

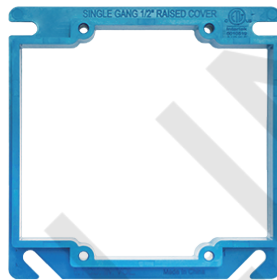


Cat. No.	Cubic Capacity	Description	Products Size L×W×D	Outer Box Size L×W×D(cm)	Std. Ctn. Qty.
A5329DE	24.75 cu in	4×4×1-3/4 (1/2" & 3/4" KO's)	4"×4"×1-3/4"		50

ENT Box Covers



PSC410



PSC420



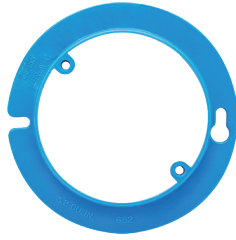
PSC400



Cat. No.	Cubic Capacity	Description	Products Size L×W×D	Outer Box Size L×W×D(cm)	Std. Ctn. Qty.
One-Gang					
PSC410	3.5 cu in	1/2" Rise	4"×4"×0.500"		
PSC411	4.2 cu in	5/8" Rise	4"×4"×0.625"		
PSC412	5.0 cu in	3/4" Rise	4"×4"×0.750"		
PSC413	6.6 cu in	1" Rise	4"×4"×1.000"		
PSC414	8.1 cu in	1-1/4" Rise	4"×4"×1.250"		
Two-Gang					
PSC420	6.1 cu in	1/2" Rise	4"×4"×0.500"		
PSC421	7.4 cu in	5/8" Rise	4"×4"×0.625"		
PSC422	8.8 cu in	3/4" Rise	4"×4"×0.850"		
Two-Gang 4" Square					
PSC400	-	Blank	4"×4"×0.1"		



Round Covers



PRC410



PRC4KO



PRC400



Cat. No.	Cubic Capacity	Description	Products Size L×W×D	Outer Box Size L×W×D(cm)	Std. Ctn. Qty.
Round Plaster Ring					
PRC410	3.2 cu in	1/2" Rise	4"×4"×0.500"		
PRC411	4.0 cu in	5/8" Rise	4"×4"×0.625"		
Round Blank Cover					
PRC4KO	-	Blank with 1/2" Knockout	4"×4"×0.1"		
PRC400	-	Blank	4"×4"×0.1"		

Octagon Ceiling Boxes



APB525BST




Cat. No.	Cubic Capacity	Description	Products Size L×W×D	Outer Box Size L×W×D(cm)	Std. Ctn. Qty.
APB525BST	20 cu in	New Work; 20 cu in; Octagon Ceiling Box with an L-Bracket for residential and light commercial ceiling fixture applications. The 6 knockouts provide multiple wiring options.	4 Dia×2.25"		50




USLINSKY®

SHANGHAI LINSKY ELECTRICAL CO.,LTD

 +86-21-67107908

 sales@linsky.cn

 www.shlinsky.com

 Office Add: Room 1002, #2 Building, Phoenix Creativity Valley,
Lane 1588 Huhang Highway, Fengxian District, SH
Factory Add 1: No.29 Lane 1888 Daye Highway, Fengxian District, SH
Factory Add 2: Tai Seng Bavet Sez, National Road No. 01, Prey Phdaov
Village, Chrak Mtes Commune, Bavet City, Svay Rieng Province, Cambodia