

  
C LISTED US  
Intertek  
5010519  
2-HR-W-C

  
USLINSKY®  
灵天电气

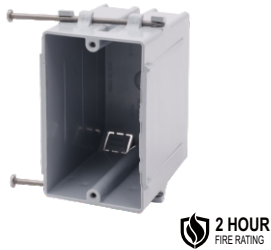


# American Plastic Outlet Box



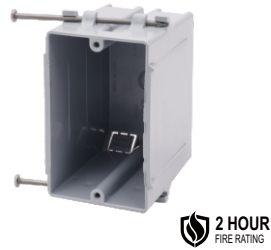
## One-Gang

Part No.	Cubic Capacity	Description	Size L×W×D	Outer Box Size L×W×D(cm)	PCS/CTN	GW/CTN (kg)
APB01N	18 cu in Four Integral Clamps	Switch/Outlet Box; New Work; 1 Gang; Captive Nail And Bracket Mounting; For Use With Non-Metallic Sheathed Cable.	3-3/4"×2-1/4"×2-7/8"	54×37.5×24	100	7.8



## One-Gang

Part No.	Cubic Capacity	Description	Size L×W×D	Outer Box Size L×W×D(cm)	PCS/CTN	GW/CTN (kg)
APB118N	18 cu in With Four Knockouts	Deep Switch/Outlet Box; New Work; 1 Gang; Captive Nail And Bracket Mounting; For Use With Non-Metallic Sheathed Cable.	3-3/4"×2-1/4"×2-7/8"	54×37.5×24	100	7.8



## One-Gang

Part No.	Cubic Capacity	Description	Size L×W×D	Outer Box Size L×W×D(cm)	PCS/CTN	GW/CTN (kg)
APB120N	20 cu in Four Knockouts	Deep Switch/Outlet Box; New Work; 1 Gang; Captive Nail And Bracket Mounting; For Use With Non-Metallic Sheathed Cable.	3-3/4"×2-1/4"×3-1/4"	54×34×29.5	100	8.3



## One-Gang

Part No.	Cubic Capacity	Description	Size L×W×D	Outer Box Size L×W×D(cm)	PCS/CTN	GW/CTN (kg)
APB118N-R	18 cu in With Four Knockouts	Red special for fire fighting equipment.	3-3/4"×2-1/4"×2-7/8"	54×37.5×24	100	7.8



## One-Gang

Part No.	Cubic Capacity	Description	Size L×W×D	Outer Box Size L×W×D(cm)	PCS/CTN	GW/CTN (kg)
APB120N-R	20.3 cu in Four Knockouts	Red special for fire fighting equipment.	3-3/4"×2-1/4"×3-1/4"	54×34×29.5	100	8.3



## One-Gang

Part No.	Cubic Capacity	Description	Size L×W×D	Outer Box Size L×W×D(cm)	PCS/CTN	GW/CTN (kg)
APB123N-R	22.5 cu in Four Knockouts	Red special for fire fighting equipment.	3-3/4"×2-1/4"×3-1/2"			





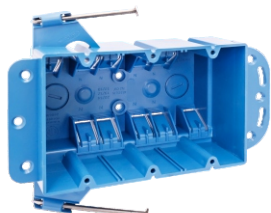
Intertek  
5010519  
2-HR-W-C



2 HOUR  
FIRE RATING

## Two-Gang

Part No.	Cubic Capacity	Description	Size L×W×D	Outer Box Size L×W×D(cm)	PCS/ CTN	GW/CTN (kg)
APB02N	32 cu in Six Integral Clamps	Switch/Outlet Box; New Work; 2 Gang; Captive Nail And Bracket Mounting; For Use With Non-Metallic Sheathed Cable.	4"×3-3/4"×3"	53.5×31.5×30.5	50	6.3



2 HOUR  
FIRE RATING

## Three-Gang

Part No.	Cubic Capacity	Description	Size L×W×D	Outer Box Size L×W×D(cm)	PCS/ CTN	GW/CTN (kg)
APB03N	44 cu in Ten Integral Clamps	Switch/Outlet Box; New Work; 3 Gang; Captive Nail And Bracket Mounting; For Use With Non-Metallic Sheathed Cable.	5-7/8"×3-3/4"×2-3/4"	50×34×31.5	30	4.9



2 HOUR  
FIRE RATING

## Four-Gang

Part No.	Cubic Capacity	Description	Size L×W×D	Outer Box Size L×W×D(cm)	PCS/ CTN	GW/CTN (kg)
APB04N	55 cu in Fourteen Integral Clamps	Switch/Outlet Box; New Work; 4 Gang; Captive Nail And Bracket Mounting; For Use With Non-Metallic Sheathed Cable.	7-7/10"×3-3/4"×2-3/4"	46×46×27	30	6



2 HOUR  
FIRE RATING

## 4" Square

Part No.	Cubic Capacity	Description	Size L×W×D	Outer Box Size L×W×D(cm)	PCS/ CTN	GW/CTN (kg)
APB418A	18 cu in Eight Integral Clamps	4" square, PVC box for residential or light commercial new construction (new work) electrical installations with a molded flange and enhanced angled nails for mounting.	4"×4"×1-5/8"			



2 HOUR  
FIRE RATING

## 4" Square

Part No.	Cubic Capacity	Description	Size L×W×D	Outer Box Size L×W×D(cm)	PCS/ CTN	GW/CTN (kg)
APB432A	32 cu in Eight Integral Clamps	4" square, PVC box for residential or light commercial new construction (new work) electrical installations with enhanced angled nails for mounting.	4"×4"×2-5/8"			



2 HOUR  
FIRE RATING

## One-Gang

Part No.	Cubic Capacity	Description	Size L×W×D	Outer Box Size L×W×D(cm)	PCS/ CTN	GW/CTN (kg)
APB108B	8 cu in Two Knockouts	New Work; 1-Gang, 8 cu. in, Shallow, Nail-on, Switch and Outlet Box with Bracket.	3-5/8"×2-3/8"×1-1/4"			





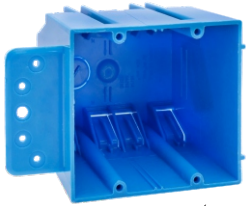
Intertek  
5010519  
2-HR-W-C



2 HOUR  
FIRE RATING

## One-Gang

Part No.	Cubic Capacity	Description	Size L×W×D	Outer Box Size L×W×D(cm)	PCS/ CTN	GW/CTN (kg)
APB118B	18 cu in Four Knockouts	New Work; 1 Gang 18 cu in Bracket Flange for wood & steel stud mounting.	3-3/4"×2-1/4"×2-15/16"			



2 HOUR  
FIRE RATING

## Two-Gang

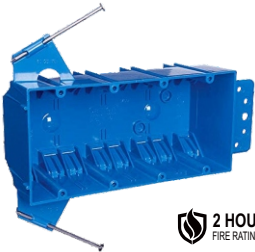
Part No.	Cubic Capacity	Description	Size L×W×D	Outer Box Size L×W×D(cm)	PCS/ CTN	GW/CTN (kg)
APB232-B	32 cu in Eight Integral Clamps	New Work; 2 Gang 32 cu in Bracket Flange for wood & steel stud mounting.	4"×3.75"×3"	48×25×31	50	5.3



2 HOUR  
FIRE RATING

## Three-Gang

Part No.	Cubic Capacity	Description	Size L×W×D	Outer Box Size L×W×D(cm)	PCS/ CTN	GW/CTN (kg)
CPB344	44 cu in Twelve Integral Clamps	New Work; 3 Gang; Captive Nail And Bracket Mounting; For Use With Non-Metallic Sheathed Cable.	5-5/8"×3-3/4"×2-11/16"			



2 HOUR  
FIRE RATING

## Four-Gang

Part No.	Cubic Capacity	Description	Size L×W×D	Outer Box Size L×W×D(cm)	PCS/ CTN	GW/CTN (kg)
CPB455	55 cu in Sixteen Integral Clamps	New Work; 4 Gang; Captive Nail And Bracket Mounting; For Use With Non-Metallic Sheathed Cable.	7-3/5"×3-7/10"×2-1/2"			





Intertek  
5010519  
2-HR-W-C



2 HOUR  
FIRE RATING

## Round

Part No.	Cubic Capacity	Description	Size L×W×D	Outer Box Size L×W×D(cm)	PCS/CTN	GW/CTN (kg)
APBR18-3	18 cu in Four Integral Clamps	Round Ceiling/Fixture Box; New Work; Captive Nail And Bracket Mounting; For Use With Non-Metallic Sheathed Cable.	3"x3"x2.75"	45.5×32×36	50	5



2 HOUR  
FIRE RATING

## Round

Part No.	Cubic Capacity	Description	Size L×W×D	Outer Box Size L×W×D(cm)	PCS/CTN	GW/CTN (kg)
APBRG18-3	18 cu in Four Integral Clamps	Round Ceiling/Fixture Box with Grounding; New Work; Captive Nail And Bracket Mounting; For Use With Non-Metallic Sheathed Cable.	3"x3"x2.75"	45.5×32×36	50	5



2 HOUR  
FIRE RATING

## Round

Part No.	Cubic Capacity	Description	Size L×W×D	Outer Box Size L×W×D(cm)	PCS/CTN	GW/CTN (kg)
APB05N	20 cu in Six Integral Clamps	Round Ceiling/Fixture Box; New Work; Captive Nail And Bracket Mounting; For Use With Non-Metallic Sheathed Cable.	4 Dia×2-1/4"	51×45.5×30	75	7.4



2 HOUR  
FIRE RATING

## Round

Part No.	Cubic Capacity	Description	Size L×W×D	Outer Box Size L×W×D(cm)	PCS/CTN	GW/CTN (kg)
APB05GN	20 cu in Grounding Six Integral Clamps	Round Ceiling/Fixture Box with Grounding; New Work; Captive Nail And Bracket Mounting; For Use With Non-Metallic Sheathed Cable.	4 Dia×2-1/4"	51×46×24	60	



2 HOUR  
FIRE RATING

## Round

Part No.	Cubic Capacity	Description	Size L×W×D	Outer Box Size L×W×D(cm)	PCS/CTN	GW/CTN (kg)
APB525A	25 cu in Six Integral Clamps	Round Ceiling/Fixture Box; New Work; Captive Nail And Bracket Mounting; For Use With Non-Metallic Sheathed Cable.	4 Dia×3.0"			



2 HOUR  
FIRE RATING

## Round

Part No.	Cubic Capacity	Description	Size L×W×D	Outer Box Size L×W×D(cm)	PCS/CTN	GW/CTN (kg)
APB525AG	25 cu in Six Integral Clamps	Round Ceiling/Fixture Box with Grounding; New Work; Captive Nail And Bracket Mounting; For Use With Non-Metallic Sheathed Cable.	4 Dia×3.0"			





2 HOUR  
FIRE RATING

## Round

Part No.	Cubic Capacity	Description	Size L×W×D	Outer Box Size L×W×D(cm)	PCS/ CTN	GW/CTN (kg)
APB620L	20 cu in Six Integral Clamps	Round Ceiling/Fixture Box; New Work; Metal L Bracket Mounting; For Use With Non-Metallic Sheathed Cable.	4 Dia×2-1/4"			



2 HOUR  
FIRE RATING

## Bar Hanger: 14.25"-22.5"

Part No.	Cubic Capacity	Description	Size L×W×D	Outer Box Size L×W×D(cm)	PCS/ CTN	GW/CTN (kg)
APB06N	20 cu in Six Integral Clamps	Round Ceiling/Fixture Box With 14.25"-22.5" Bar Hanger; Captive Nail And Bracket Mounting; For Use With Non-Metallic Sheathed Cable.	4 Dia×2-1/4"	43.5×37×36.5	55	14



2 HOUR  
FIRE RATING

## Bar Hanger: 16"-24"

Part No.	Cubic Capacity	Description	Size L×W×D	Outer Box Size L×W×D(cm)	PCS/ CTN	GW/CTN (kg)
APB06NL	20 cu in Six Integral Clamps	Round Ceiling/Fixture Box With 16"-24" Bar Hanger; Captive Nail And Bracket Mounting; For Use With Non-Metallic Sheathed Cable.	4 Dia×2-1/4"	56.5×38.5×38	75	22.5



2 HOUR  
FIRE RATING

## Bar Hanger: 16"-24" with Grounding

Part No.	Cubic Capacity	Description	Size L×W×D	Outer Box Size L×W×D(cm)	PCS/ CTN	GW/CTN (kg)
APB06NGL	20 cu in Six Integral Clamps	Round Ceiling/Fixture Box With 16"-24" Bar Hanger with Grounding; Captive Nail And Bracket Mounting; For Use With Non-Metallic Sheathed Cable.	4 Dia×2-1/4"			



2 HOUR  
FIRE RATING

## Ceiling Box

Part No.	Cubic Capacity	Description	Size L×W×D	Outer Box Size L×W×D(cm)	PCS/ CTN	GW/CTN (kg)
CFB-1	13.4 cu in Two Knockouts	Fits any ceiling fan up to 70 lbs. or lighting fixture up to 150 lbs. Electrical box measures 4 in. high by 1/2 in. deep; 13.4 cu in. capacity	4"×1 / 2"×4"			





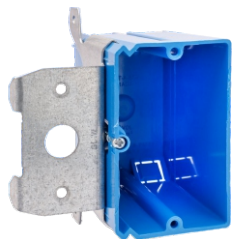
Intertek  
5010519  
2-HR-W-C



2 HOUR  
FIRE RATING

## One-Gang

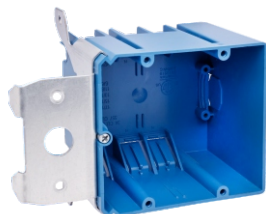
Part No.	Cubic Capacity	Description	Size L×W×D	Outer Box Size L×W×D(cm)	PCS/ CTN	GW/CTN (kg)
APB123SB	20.3 cu in Four Integral Clamps	Deep Switch/Outlet Box; 1 Gang; Steel Stud Bracket & Wire Clamps; For Use With Non-Metallic Sheathed Cable.	3-3/4"×2-1/4"×3-1/10"	48×33.5×41	100	



2 HOUR  
FIRE RATING

## One-Gang

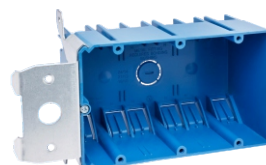
Part No.	Cubic Capacity	Description	Size L×W×D	Outer Box Size L×W×D(cm)	PCS/ CTN	GW/CTN (kg)
APB121-ADJ	21 cu in With Four Knockouts	Deep Switch/Outlet Box; 1 Gang; Adjustable Steel Stud Bracket & Wire Clamps; For Use With Non-Metallic Sheathed Cable.	3-3/4"×2-1/4"×3-3/10"	51×34.5×37	100	



2 HOUR  
FIRE RATING

## Two-Gang

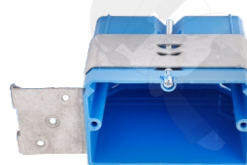
Part No.	Cubic Capacity	Description	Size L×W×D	Outer Box Size L×W×D(cm)	PCS/ CTN	GW/CTN (kg)
APB234-ADJ	34 cu in With Six Integral Clamps	Deep Switch/Outlet Box; 2 Gang; Adjustable Steel Stud Bracket & Wire Clamps; For Use With Non-Metallic Sheathed Cable.	4.05"×3.65"×3"	51.5×36.5×32.5	60	



2 HOUR  
FIRE RATING

## Three-Gang

Part No.	Cubic Capacity	Description	Size L×W×D	Outer Box Size L×W×D(cm)	PCS/ CTN	GW/CTN (kg)
APB349-ADJ	49 cu in With Ten Integral Clamps	Deep Switch/Outlet Box; 3 Gang; Adjustable Steel Stud Bracket & Wire Clamps; For Use With Non-Metallic Sheathed Cable.	5.9"×3.6"×3"	51×35.5×24.5	30	6.6



2 HOUR  
FIRE RATING

## One-Gang

Part No.	Cubic Capacity	Description	Size L×W×D	Outer Box Size L×W×D(cm)	PCS/ CTN	GW/CTN (kg)
APB121-ADJ-E	21 cu in With Four Knockouts	Deep Switch/Outlet Box; 1 Gang; Adjustable Steel Stud Bracket & Wire Clamps; For Use With Non-Metallic Sheathed Cable.	2.3"×3.7"×3.3"			





Intertek  
5010519  
2-HR-W-C



2 HOUR  
FIRE RATING

## One-Gang

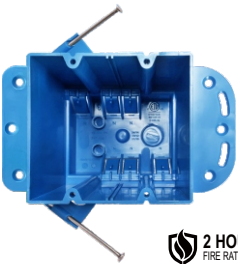
Part No.	Cubic Capacity	Description	Size L×W×D	Outer Box Size L×W×D(cm)	PCS/ CTN	GW/CTN (kg)
APB123N	23 cu in Four Knockouts	Deep Switch/Outlet Box; New Work; 1 Gang; Captive Nail And Bracket Mounting; For Use With Non-Metallic Sheathed Cable.	3-3/4"×2-1/4"×3-1/2"			



2 HOUR  
FIRE RATING

## One-Gang

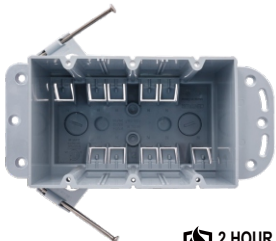
Part No.	Cubic Capacity	Description	Size L×W×D	Outer Box Size L×W×D(cm)	PCS/ CTN	GW/CTN (kg)
APB01DN	23 cu in Four Integral Clamps	Deep Switch/Outlet Box; New Work; 1 Gang; Captive Nail And Bracket Mounting; For Use With Non-Metallic Sheathed Cable.	3-3/4"×2-1/4"×3-1/2"	54×37×29.5	100	10.3



2 HOUR  
FIRE RATING

## Two-Gang

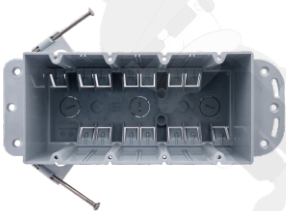
Part No.	Cubic Capacity	Description	Size L×W×D	Outer Box Size L×W×D(cm)	PCS/ CTN	GW/CTN (kg)
APB02DN	44 cu in Six Integral Clamps	Deep Switch/Outlet Box; New Work; 2 Gang; Captive Nail And Bracket Mounting; For Use With Non-Metallic Sheathed Cable.	4"×3-3/4"×4"	56×42.5×43	60	



2 HOUR  
FIRE RATING

## Three-Gang

Part No.	Cubic Capacity	Description	Size L×W×D	Outer Box Size L×W×D(cm)	PCS/ CTN	GW/CTN (kg)
APB03DN	68 cu in Ten Integral Clamps	Deep Switch/Outlet Box; New Work; 3 Gang; Captive Nail And Bracket Mounting; For Use With Non-Metallic Sheathed Cable.	5-7/8"×3-3/4"×4"	41×39×43	30	5.82



2 HOUR  
FIRE RATING

## Four-Gang

Part No.	Cubic Capacity	Description	Size L×W×D	Outer Box Size L×W×D(cm)	PCS/ CTN	GW/CTN (kg)
APB04DN	87 cu in Fourteen Integral Clamps	Deep Switch/Outlet Box; New Work; 4 Gang; Captive Nail And Bracket Mounting; For Use With Non-Metallic Sheathed Cable.	7-7/10"×3-3/4"×4"	46.5×45.5×43	30	7.32







Intertek  
5010519  
2-HR-W-C



2 HOUR  
FIRE RATING

## One-Gang

Part No.	Cubic Capacity	Description	Size L×W×D	Outer Box Size L×W×D(cm)	PCS/ CTN	GW/CTN (kg)
APB010	14 cu in Four Integral Clamps	Switch/Outlet Box; Old Work; 1 Gang; Swing Clamp And Ears Mounting; For Use With Non-Metallic Sheathed Cable; Suitable For Masonry Walls.	4-3/10"×2-1/4"×2-3/4"	47×29.5×30	100	6.8



2 HOUR  
FIRE RATING

## One-Gang

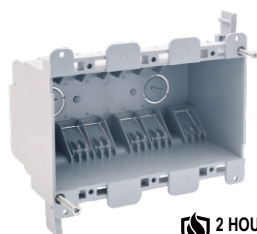
Part No.	Cubic Capacity	Description	Size L×W×D	Outer Box Size L×W×D(cm)	PCS/ CTN	GW/CTN (kg)
APB010-20	20 cu in Four Integral Clamps	Deep Switch/Outlet Box; Old Work; 1 Gang; Swing Clamp And Ears Mounting; For Use With Non-Metallic Sheathed Cable; Suitable For Masonry Walls.	4-3/10"×2-1/4"×3-1/4"	47×29.5×19.5	50	4.5



2 HOUR  
FIRE RATING

## Two-Gang

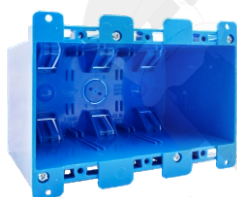
Part No.	Cubic Capacity	Description	Size L×W×D	Outer Box Size L×W×D(cm)	PCS/ CTN	GW/CTN (kg)
APB020	25 cu in Six Integral Clamps	Switch/Outlet Box; Old Work; 2 Gang; Swing Clamp And Ears Mounting; For Use With Non-Metallic Sheathed Cable; Suitable For Masonry Walls.	4"×3-3/4"×2-3/4"	55×50.5×15.5	50	5



2 HOUR  
FIRE RATING

## Three-Gang

Part No.	Cubic Capacity	Description	Size L×W×D	Outer Box Size L×W×D(cm)	PCS/ CTN	GW/CTN (kg)
APB030	38 cu in Ten Integral Clamps	Switch/Outlet Box; Old Work; 3 Gang; Swing Clamp And Ears Mounting; For Use With Non-Metallic Sheathed Cable; Suitable For Masonry Walls.	5-7/10"×3-3/4"×2-3/4"	47×45×30	60	8



2 HOUR  
FIRE RATING

## Three-Gang

Part No.	Cubic Capacity	Description	Size L×W×D	Outer Box Size L×W×D(cm)	PCS/ CTN	GW/CTN (kg)
APB030D	55 cu in Ten Integral Clamps	Switch/Outlet Box; Old Work; 3 Gang; Swing Clamp And Ears Mounting; For Use With Non-Metallic Sheathed Cable; Suitable For Masonry Walls.	5-7/10"×3-3/4"×2-3/4"	47×45×30	60	8



2 HOUR  
FIRE RATING

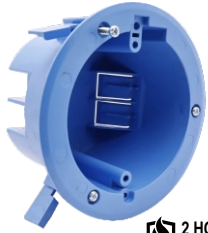
## Four-Gang

Part No.	Cubic Capacity	Description	Size L×W×D	Outer Box Size L×W×D(cm)	PCS/ CTN	GW/CTN (kg)
APB040	69.8 cu in Fourteen Integral Clamps	Switch/Outlet Box; Old Work; 4 Gang; Swing Clamp And Ears Mounting; For Use With Non-Metallic Sheathed Cable; Suitable For Masonry Walls.	7-7/10"×3-3/4"×3-1/2"	47×40×28.5	30	6.2





Intertek  
5010519  
2-HR-W-C



2 HOUR  
FIRE RATING

## Round

Part No.	Cubic Capacity	Description	Size L×W×D	Outer Box Size L×W×D(cm)	PCS/CTN	GW/CTN (kg)
APB050	18 cu in Six Integral Clamps	Round Ceiling/Fixture Box; Old Work; Captive Nail And Bracket Mounting; For Use With Non-Metallic Sheathed Cable.	4-1/4"×Dia×2-1/2"	48.5×48.5×29	100	10



2 HOUR  
FIRE RATING

## Round

Part No.	Cubic Capacity	Description	Size L×W×D	Outer Box Size L×W×D(cm)	PCS/CTN	GW/CTN (kg)
APB050G	18 cu in Six Integral Clamps With Grounding	Round Ceiling/Fixture Box Grounding; Old Work; Captive Nail And Bracket Mounting; For Use With Non-Metallic Sheathed Cable.	4-1/4"×Dia×2-1/2"	48.5×48.5×29	100	10



2 HOUR  
FIRE RATING

## One-Gang

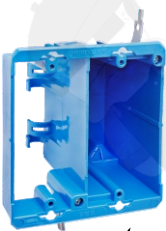
Part No.	Cubic Capacity	Description	Size L×W×D	Outer Box Size L×W×D(cm)	PCS/CTN	GW/CTN (kg)
APB108-OW	8 cu in Two Knockouts	Old Work 1Gang 8 cu in Shallow Box	2.4"×3.65"×1.25"			



2 HOUR  
FIRE RATING

## One-Gang

Part No.	Cubic Capacity	Description	Size L×W×D	Outer Box Size L×W×D(cm)	PCS/CTN	GW/CTN (kg)
APB117-OW	17 cu in Four Knockouts	Old Work 1Gang 17 cu in Shallow Box with side compartment	2"×4"×2"	55×35×28	90	8.1



2 HOUR  
FIRE RATING

## Two-Gang

Part No.	Cubic Capacity	Description	Size L×W×D	Outer Box Size L×W×D(cm)	PCS/CTN	GW/CTN (kg)
APB18-4DV	18 cu in	Old Work; Integral molded V-clamp; Thermoplastic molded ears #4 swing brackets.	3-25/32"×2-7/32"×2-1/4"			



2 HOUR  
FIRE RATING

## One-Gang

Part No.	Cubic Capacity	Description	Size L×W×D	Outer Box Size L×W×D(cm)	PCS/CTN	GW/CTN (kg)
APB1GOWE	-	1-Gang, Old Work Switch & Outlet Box Extender. It can be used with most standard 1-gang nonmetallic electrical switch and outlet boxes.	3.28"×2.19"×1.26"			





## One-Gang

Part No.	Cubic Capacity	Description	Size (L×W×D)
APB121ADJLV	21 cu in	Low-voltage Adjustable brackets.	3.56"×3.88"×1.69"



## Two-Gang

Part No.	Cubic Capacity	Description	Size (L×W×D)
APB234ADJLV	34 cu in	Low-voltage Adjustable brackets.	3.56"×5.63"×1.69"



## One-Gang

Part No.	Cubic Capacity	Description	Size (L×W×D)
APB1GN	N/A	New work, 1 Gang; low voltage bracket with nails used for low voltage installations for new construction projects (new work) applications.	3.73"×2.32"×3.15"



## Two-Gang

Part No.	Cubic Capacity	Description	Size (L×W×D)
APB2GN	N/A	New work, 2 Gang; low voltage bracket with nails used for low voltage installations for new construction projects (new work) applications.	3.77"×4.07"×3.15"



## Three-Gang

Part No.	Cubic Capacity	Description	Size (L×W×D)
APB3GN	44 cu in	New work, 3 Gang; low voltage bracket with nails used for low voltage installations for new construction projects (new work) applications.	3.69"×5.81"×1.50"



## One-Gang

Part No.	Cubic Capacity	Description	Size (L×W×D)
APB1GOW	N/A	Old Work; 1-Gang; Low voltage bracket used for low voltage installations in renovation (old work) applications.	4.32"×2.52"×1.66"





## Two-Gang

Part No.	Cubic Capacity	Description	Size (L×W×D)
APB2GOW	N/A	Old Work; 2-Gang; Low voltage bracket iused for low voltage installations in renovation (old work) applications.	4.28"×4.28"×1.66"



USLINSKY 灵天电气

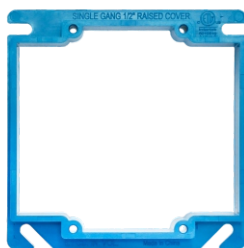




## One-Gang Electrical Box Cover Risers



Part No.	Cubic Capacity	Description	Size (L×W×D)
PSC410	3.5 cu in	1-Gang Electrical Switch and Outlet Box Cover Risers. The risers feature 4 notches for easy installation of screws to secure the riser.	4"×4"×0.500"
PSC411	4.2 cu in		4"×4"×0.625"
PSC412	5.0 cu in		4"×4"×0.750"
PSC413	6.6 cu in		4"×4"×1.000"
PSC414	8.1 cu in		4"×4"×1.250"



## Two-Gang Electrical Box Cover Risers

Part No.	Cubic Capacity	Description	Size (L×W×D)
PSC420	6.1 cu in	2-Gang Electrical Switch and Outlet Box Cover Risers. The risers feature 4 notches for easy installation of screws to secure the riser.	4"×4"×0.500"
PSC421	7.4 cu in		4"×4"×0.625"
PSC422	8.8 cu in		4"×4"×0.850"



## Two-Gang 4" Square Blank Cover

Part No.	Cubic Capacity	Description	Size (L×W×D)
PSC400	-	2-Gang 4" Square Switch and Outlet Box Cover.	4"×4"×0.1"



## 4" Round Box Plaster Ring

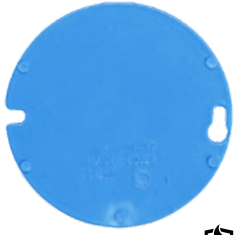
Part No.	Cubic Capacity	Description	Size (L×W×D)
PRC410	4.0 cu in	Round plaster rings (also called a mud rings) provide riser or extensions for any 4 inch ceiling boxes or ENT ceiling box.	4"×4"×0.500"
PRC411	20.375 cu in		4"×4"×0.625"



## 4" Round Blank Cover with 1/2 Knockout

Part No.	Cubic Capacity	Description	Size (L×W×D)
PRC4KO	-	4" round box cover with a knockout. It is ideal for covering 4" ceiling boxes or ENT ceiling boxes that are not in use, and the knockout provides easy access without having to remove the cover.	4"×4"×0.1"





**2 HOUR**  
FIRE RATING

## 4"Round Blank Cover

Part No.	Cubic Capacity	Description	Size (L×W×D)
PRC400	-	4"round box cover that is ideal for covering 4" ceiling boxes or ENT ceiling boxes that are not in use	4"×4"×0.1"



**2 HOUR**  
FIRE RATING

## Round

Part No.	Cubic Capacity	Description	Size (L×W×D)
STACO90-069	-	Round blank cover.Ceiling box cover.	



USLINSKY 灵天电气





## One-Gang

COMING SOON

Part No.	Cubic Capacity	Description	Size (L×W×D)
FG01N	22.5 cu in	Deep Switch/Outlet Box; New Work; 1 Gang; Captive Nail Mounting; For Use With Non-Metallic Sheathed Cable.	3-27/32"×2-1/4"×3-9/16"



## Two-Gang

COMING SOON

Part No.	Cubic Capacity	Description	Size (L×W×D)
FG02N	37 cu in	Deep Switch/Outlet Box; New Work; 2 Gang; Captive Nail Mounting; For Use With Non-Metallic Sheathed Cable.	3-3/4"×4"×3-7/16"



## Three-Gang

COMING SOON

Part No.	Cubic Capacity	Description	Size (L×W×D)
FG03N	56.5 cu in	Deep Switch/Outlet Box; New Work; 3 Gang; Captive Nail Mounting; For Use With Non-Metallic Sheathed Cable.	3-3/4"×5-11/16"×3-9/16"



## Four-Gang

COMING SOON

Part No.	Cubic Capacity	Description	Size (L×W×D)
FG04N	75 cu in	Deep Switch/Outlet Box; New Work; 4 Gang; Captive Nail Mounting; For Use With Non-Metallic Sheathed Cable.	3-3/4"×7-1/2"×3-9/16"



## Round

COMING SOON

Part No.	Cubic Capacity	Description	Size (L×W×D)
FG05N	22.5 cu in	Round Ceiling/Fixture Box; New Work; Captive Nail Mounting; For Use With Non-Metallic Sheathed Cable.	4 Dia×2-7/16"



## Bar Hanger: 16"-24"

COMING SOON

Part No.	Cubic Capacity	Description	Size (L×W×D)
FG06N	22.5 cu in	Round Ceiling/Fixture Box With 16"-24" Bar Hanger; Bracket Mounting; For Use With Non-Metallic Sheathed Cable.	4 Dia×2-7/16"





## One-Gang



Part No.	Description	Size (L×W×D)
EXR-01	Single gang electrical outlet box extender	2.43"×4.28"×1.85"



## Two-Gang



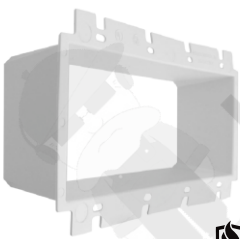
Part No.	Description	Size (L×W×D)
EXR-02	Two gang electrical outlet box extender	4.32"×4.28"×1.85"



## Three-Gang



Part No.	Description	Size (L×W×D)
EXR-03	Three gang electrical outlet box extender	6.13"×4.28"×1.85"



## Four-Gang



Part No.	Description	Size (L×W×D)
EXR-04	Four gang electrical outlet box extender	7.80"×4.28"×1.85"



## Round



Part No.	Description	Size (L×W×D)
EXR-05	Ceiling box extender/Set back ceilings	4.92"×4.92"×1.50"





This authorizes the application of the Certification Mark(s) shown below to the models described in the Product(s) Covered section when made in accordance with the conditions set forth in the Certification Agreement and Listing Report. This authorization also applies to multiple listee model(s) identified on the correlation page of the Listing Report.

This document is the property of Intertek Testing Services and is not transferable. The certification mark(s) may be applied only at the location of the Party Authorized To Apply Mark.

<b>Applicant:</b>	Shanghai Linsky Electrical Co., Ltd	<b>Manufacturer:</b>	Shanghai Linsky Electrical Co., Ltd
	No.14 Lane 1515 Yuandong Road,		No.14 Lane 1515 Yuandong Road,
<b>Address:</b>	FENGXIAN DISTRICT Shanghai	<b>Address:</b>	FENGXIAN DISTRICT Shanghai 201400
	201400		
<b>Country:</b>	China	<b>Country:</b>	China
<b>Party Authorized To Apply Mark:</b>	Same as Manufacturer		
<b>Report Issuing Office:</b>	Intertek Testing Services Shanghai Limited		
<b>Control Number:</b>	<u>5010519</u>	<b>Authorized by:</b>	 for L. Matthew Snyder, Certification Manager



This document supersedes all previous Authorizations to Mark for the noted Report Number.

This Authorization to Mark is for the exclusive use of Intertek's Client and is provided pursuant to the Certification agreement between Intertek and its Client. Intertek's responsibility and liability are limited to the terms and conditions of the agreement. Intertek assumes no liability to any party, other than to the Client in accordance with the agreement, for any loss, expense or damage occasioned by the use of this Authorization to Mark. Only the Client is authorized to permit copying or distribution of this Authorization to Mark and then only in its entirety. Use of Intertek's Certification mark is restricted to the conditions laid out in the agreement and in this Authorization to Mark. Any further use of the Intertek name for the sale or advertisement of the tested material, product or service must first be approved in writing by Intertek. Initial Factory Assessments and Follow up Services are for the purpose of assuring appropriate usage of the Certification mark in accordance with the agreement, they are not for the purposes of production quality control and do not relieve the Client of their obligations in this respect.

Intertek Testing Services NA Inc.  
545 East Algonquin Road, Arlington Heights, IL 60005  
Telephone 800-345-3851 or 847-439-5667 Fax 312-283-1672

<b>Standard(s):</b>	Nonmetallic Outlet Boxes, Flush-Device Boxes, and Covers [UL 514C:2014 Ed.4+R:18Aug2020] Nonmetallic Outlet Boxes [CSA C22.2#18.2:2006 Ed.1+U1;U2]
<b>Product:</b>	Junction box
<b>Brand Name:</b>	USLINSKY
<b>Models:</b>	APB01O, APB01O-20, APB02O, APB03O, APB04O, APB05O, APB01N, APB02N, APB03N, APB04N, APB05N, APB05GN, APB01DN, APB02DN, APB03DN, APB04DN, APB06N, APB06NL, APB06GNL, APB118N, APB120N, APB123N, APB118B, APB123SB, CFB-1, APB121-ADJ, CPB118, CPB232, CPB344, CPB455, PSB120, PSB114-OW, PSB120-OW, PSB225-OW, PSBR20, PSBR18-OW, PSBRG20, PSBR20-BHA, PSBRG20-BHA, PSB335-OW, PSB468-OW, PSB123, CM-FSLPB, PSB118, PSB232, PSB334, PSB445, APB121-ADJ-E, APB234-ADJ, APB349-ADJ, APB232-B, APB117-OW, APBR18-3, APB05OG, APB03OD, APB06NCL

This authorizes the application of the Certification Mark(s) shown below to the models described in the Product(s) Covered section when made in accordance with the conditions set forth in the Certification Agreement and Listing Report. This authorization also applies to multiple listee model(s) identified on the correlation page of the Listing Report.

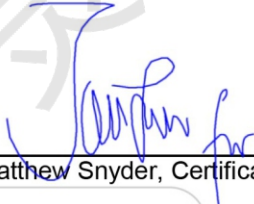
This document is the property of Intertek Testing Services and is not transferable. The certification mark(s) may be applied only at the location of the Party Authorized To Apply Mark.

**Applicant:** Shanghai Linsky Electrical Co., Ltd.  
**Address:** No. 14 Lane 1515 Yuandong Road, Fengxian District Shanghai City  
**Country:** China  
**Contact:** Mr. Huanhe Zheng  
**Phone:** 18017201925  
**FAX:** -  
**Email:** sales@linsky.cn

**Manufacturer:** Shanghai Linsky Electrical Co., Ltd.  
**Address:** No. 14 Lane 1515 Yuandong Road, Fengxian District Shanghai City  
**Country:** China  
**Contact:** Mr. Huanhe Zheng  
**Phone:** 18017201925  
**FAX:** -  
**Email:** sales@linsky.cn

**Party Authorized To Apply Mark:** Same as Manufacturer  
**Report Issuing Office:** Intertek Testing Services Shanghai

**Control Number:** 5010519

**Authorized by:**  for L. Matthew Snyder, Certification Manager



This document supersedes all previous Authorizations to Mark for the noted Report Number.

This Authorization to Mark is for the exclusive use of Intertek's Client and is provided pursuant to the Certification agreement between Intertek and its Client. Intertek's responsibility and liability are limited to the terms and conditions of the agreement. Intertek assumes no liability to any party, other than to the Client in accordance with the agreement, for any loss, expense or damage occasioned by the use of this Authorization to Mark. Only the Client is authorized to permit copying or distribution of this Authorization to Mark and then only in its entirety. Use of Intertek's Certification mark is restricted to the conditions laid out in the agreement and in this Authorization to Mark. Any further use of the Intertek name for the sale or advertisement of the tested material, product or service must first be approved in writing by Intertek. Initial Factory Assessments and Follow up Services are for the purpose of assuring appropriate usage of the Certification mark in accordance with the agreement, they are not for the purposes of production quality control and do not relieve the Client of their obligations in this respect.

Intertek Testing Services NA Inc.  
545 East Algonquin Road, Arlington Heights, IL 60005  
Telephone 800-345-3851 or 847-439-5667 Fax 312-283-1672

<b>Standard(s):</b>	Non-Metallic Outlet Boxes, Flush-Device Boxes, And Covers [UL 514C:2014 Ed.4+R:10 Dec2014] Nonmetallic Outlet Boxes (R2016) [CSA C22.2#18.2:2006 Ed.1+U1]
<b>Product:</b>	Extension ring
<b>Brand Name:</b>	USLINSKY
<b>Models:</b>	EXR-1, EXR-2, EXR-3, EXR-4, EXR-5

## TEST REPORT

Issue Date: 2022-04-01

Intertek Report No.: 220113005SHF-005-R1

### REPORT ISSUED TO

Shanghai Linsky Electrical Co., Ltd.

No.14 Lane 1515 Yuandong Road, Fengxian District, Shanghai City, China

### SECTION 1

#### SCOPE

Intertek has conducted testing for Shanghai Linsky Electrical Co., Ltd. on Junction Box, Model APB040, APB050, CFB-1 and APB05GN, to evaluate eligibility for use in a 2-hour fire resistance rated wall assembly. This test was designed to demonstrate evaluation on the Junction Box, Model APB010, APB010-20, APB020, APB030, APB06GNL, APB06NL, APB06N, APB03OD, APB117-OW, APB06NCL, APB05OG, APBR18-3 and APB05N. This evaluation began on January 13, 2022 and was completed on March 14, 2022. The test was conducted on February 28, 2022.

The test was conducted in accordance with UL 514C-2014(R2020) Standard for Nonmetallic Outlet Boxes, Flush-Device Boxes, and Covers, UL 263-2011(R2021) Standard for Fire Tests of Building Construction and Materials and UL 1479-2015(R2021) Standard for Fire Tests of Penetration Firestops.

This report does not constitute certification of this product nor an opinion or endorsement by this laboratory.

### SECTION 2

#### SUMMARY OF TEST RESULTS

The Junction Box, Model APB040, APB010, APB010-20, APB020, APB030, APB050, APB06GNL, APB06NL, APB06N, CFB-1, APB05GN, APB03OD, APB117-OW, APB06NCL, APB05OG, APBR18-3 and APB05N described and tested in this report met the requirements of 'T' Rating for use in a 2-hour fire resistance rated wall assembly in accordance with UL 514C-2014(R2020).

For INTERTEK B&C:

<b>COMPLETED BY:</b>	Henri Zeng Engineer – Building & Construction
<b>TITLE:</b>	
<b>SIGNATURE:</b>	<i>Henri Zeng</i>
<b>DATE:</b>	2022-04-28

<b>REVIEWED BY:</b>	Jason Xu Operation Supervisor Building & Construction
<b>TITLE:</b>	
<b>SIGNATURE:</b>	<i>Jason Xu</i>
<b>DATE:</b>	2022-04-28



This report is for the exclusive use of Intertek's Client and is provided pursuant to the agreement between Intertek and its Client. Intertek's responsibility and liability are limited to the terms and conditions of the agreement. Intertek assumes no liability to any party, other than to the Client in accordance with the agreement, for any loss, expense or damage occasioned by the use of this report. Only the Client is authorized to permit copying or distribution of this report and then only in its entirety. Any use of the Intertek name or one of its marks for the sale or advertisement of the tested material, product or service must first be approved in writing by Intertek. The observations and test results in this report are relevant only to the sample(s) tested. This report by itself does not imply that the material, product, or service is or has ever been under an Intertek certification program.

The report was digital signed by Shang Hai, Intertek Group plc, please using Adobe Acrobat Reader to verify the authenticity.

## TEST REPORT

Issue Date: 2022-04-01

Intertek Report No.: 220113005SHF-006-R1

### REPORT ISSUED TO

Shanghai Linsky Electrical Co., Ltd.

No.14 Lane 1515 Yuandong Road, Fengxian District, Shanghai City, China

### SECTION 1

#### SCOPE

Intertek has conducted testing for Shanghai Linsky Electrical Co., Ltd. on Junction Box, Model APB04DN to evaluate eligibility for use in a 2-hour fire resistance rated wall assembly. The test was designed to demonstrate evaluation on the Junction Box, Model APB01N, APB02N, APB03N, APB04N, APB01DN, APB02DN, APB03DN, APB118N, APB120N, APB123N, APB118B, APB123SB, APB232-B, APB234-ADJ, APB349-ADJ, APB121-ADJ-E, CPB118, CPB232, CPB344, CPB455 and APB120-ADJ. This evaluation began on January 13, 2022 and was completed on March 26, 2022. The Test No. 1 was conducted on February 28, 2022 and the Test No. 2 was conducted on March 26, 2022.

The tests were conducted in accordance with UL 514C-2014(R2020) Standard for Nonmetallic Outlet Boxes, Flush-Device Boxes, and Covers, UL 263-2011(R2021) Standard for Fire Tests of Building Construction and Materials and UL 1479-2015(R2021) Standard for Fire Tests of Penetration Firestops.

This report does not constitute certification of this product nor an opinion or endorsement by this laboratory.

### SECTION 2

#### SUMMARY OF TEST RESULTS

The Junction Box, Model APB04DN, APB01N, APB02N, APB03N, APB04N, APB01DN, APB02DN, APB03DN, APB118N, APB120N, APB123N, APB118B, APB123SB, APB232-B, APB234-ADJ, APB349-ADJ, APB121-ADJ-E, CPB118, CPB232, CPB344, CPB455 and APB120-ADJ described and tested in this report met the requirements of 'T' Rating for use in a 2-hour fire resistance rated wall assembly in accordance with UL 514C-2014(R2020).

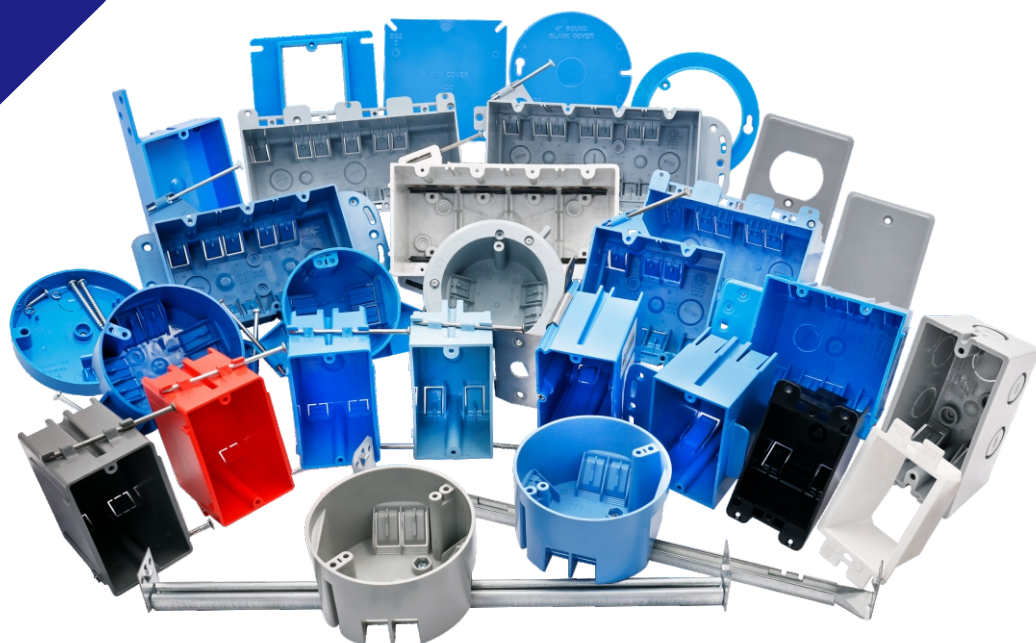
For INTERTEK B&C:

<b>COMPLETED BY:</b>	Henri Zeng	<b>REVIEWED BY:</b>	Jason Xu
<b>TITLE:</b>	Engineer – Building & Construction	<b>TITLE:</b>	Operation Supervisor Building & Construction
<b>SIGNATURE:</b>		<b>SIGNATURE:</b>	
<b>DATE:</b>	2022-04-28	<b>DATE:</b>	2022-04-28



This report is for the exclusive use of Intertek's Client and is provided pursuant to the agreement between Intertek and its Client. Intertek's responsibility and liability are limited to the terms and conditions of the agreement. Intertek assumes no liability to any party, other than to the Client in accordance with the agreement, for any loss, expense or damage occasioned by the use of this report. Only the Client is authorized to permit copying or distribution of this report and then only in its entirety. Any use of the Intertek name or one of its marks for the sale or advertisement of the tested material, product or service must first be approved in writing by Intertek. The observations and test results in this report are relevant only to the sample(s) tested. This report by itself does not imply that the material, product, or service is or has ever been under an Intertek certification program.

The report was digital signed by Shang Hai, Intertek Group plc, please using Adobe Acrobat Reader to verify the authenticity.



## SHANGHAI LINSKY ELECTRICAL CO.,LTD

☎ +86-21-67107908

✉ sales@linsky.cn

🌐 www.linsky.cn

📍 Office Add: Room 1002, 2# Building, Phoenix Creativity Valley,  
1588# Huhang Highway, Fengxian District, Shanghai, China.

Factory Add: No. 15, Lane 1515, Yuandong Road, Fengxian  
District, Shanghai, China.